



MONTHLY MEMBERSHIP PROGRESS REPORT

District 2 A1

Results as of: 05/31/2019

GMT: GREGORY GILLIAM

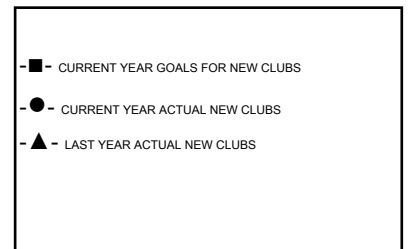
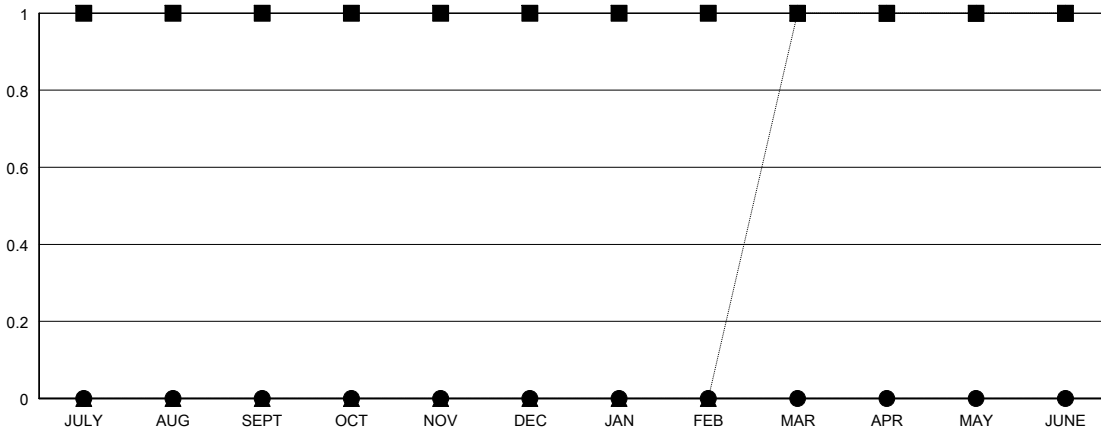
LOCATION TEXAS

GMT CA

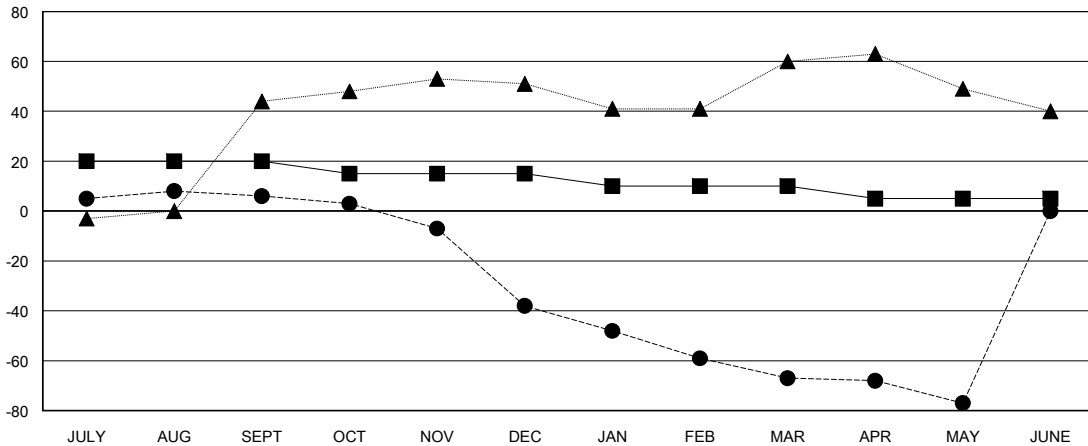
Clubs			
RESULTS FOR 2018-2019			
QUARTER	NEW CLUB GOAL	NEW CLUBS	DROPPED CLUBS
JULY/AUG/SEPT	1	0	0
OCT/NOV/DEC	0	0	2
JAN/FEB/MAR	0	0	0
APR/MAY/JUNE	0	0	0

Members			
RESULTS FOR 2018-2019			
QUARTER	MEMBER GROWTH NET GOAL	MEMBER GROWTH ACTUAL	DROPPED MEMBERS ACTUAL (including transfers)
JULY/AUG/SEPT	20	50	40
OCT/NOV/DEC	-5	23	63
JAN/FEB/MAR	-5	31	57
APR/MAY/JUNE	-5	21	28

GOALS AND ACTUAL NEW CLUBS CUMULATIVE



GOALS AND ACTUAL MEMBERS CUMULATIVE



DROPPED CLUBS: 2

29 CLUBS OF 50 ADDED 1 OR MORE NEW MEMBERS

GENDER DISTRIBUTION	
MALE	862 (66.62%)
FEMALE	432 (33.38%)
Women Percentage Fiscal Year Goal: 50%	

DROPPED MEMBERS	
DECEASED	15
CLUB CANCELLED	13
OTHER	160
TOTAL	188

[CLICK HERE FOR CUMULATIVE MEMBERSHIP DATA](#)

TOTAL FAMILY UNIT MEMBERS	172
FAMILY MEMBERS PAYING HALF DUES	88